

TRACTION SYSTEM

HAND AND WRIST SURGERY

Horizontal application

Vertical application

Modular traction



Indications

The Traction System is designed for the treatment of both soft tissue injuries and fractures of the hand and wrist. The most common indications include the following:

- Wrist arthroscopy
- Distal radius fractures reduction
- Scaphoid fracture reduction

Depending on the procedure, the Traction System can be used with or without traction.

FEATURES

Eccentric positioning of the hand for interference-free intraoperative radiographic monitoring

Horizontal or vertical application depending on procedure

Radiolucent arm support

Easy to assemble and disassemble

Traction from 0 to 10 kg



5003000C COMPLETE TRACTION SYSTEM

Components

UNIT



Code	Description	Q.tà
5003000	Body of Traction System	1

VELCRO STRAP



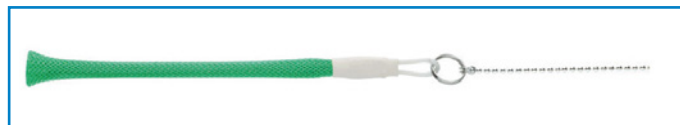
Code	Description	Qty
5003004	Length 450 mm	1
5003002	Length 550 mm	1

Accessories

STERILIZATION SET

Code	Description	Qty
5003001	Sterilization set	1

FINGER TRAPS, NYLON



Code	Description	Qty
500302P	Green / Small	2
500304P	Red / Medium	2
500306P	White / Large	2

FINGER TRAPS, STAINLESS STEEL



Code	Description	Qty
500302A	S / Small	2
500304A	M / Medium	2
500306A	L / Large	2

5003000A REDUCED TRACTION SYSTEM

Components

UNIT



Code	Description	Qty
5003000	Body of Traction System	1

FINGER TRAPS, NYLON



Code	Description	Qty
500302P	Green / Small	2
500304P	Red / Medium	2
500306P	White / Large	2

FASCIA IN VELCRO



Code	Description	Qty
5003004	Length 450 mm	1
5003002	Length 550 mm	1

The system is covered by the CE mark

Accessories

STERILIZATION SET

Code	Description	Qty
5003001	Sterilization set	1

Sterilization

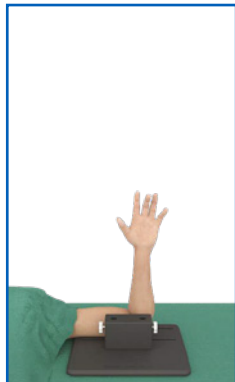
The Traction System is supplied NON-sterile. It is recommended that the system be sterilized in a saturated steam autoclave as follows:

TEMPERATURE: 134°

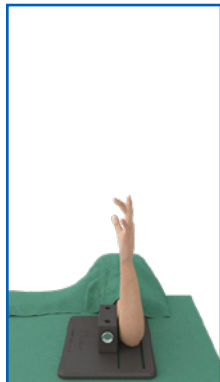
EXPOSURE: 5 minutes

Vertical application

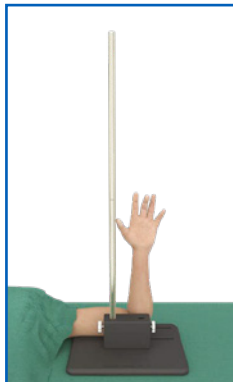
1A



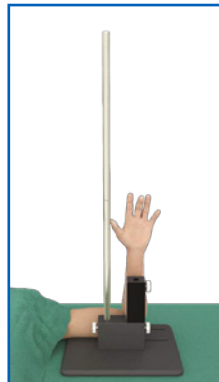
1B



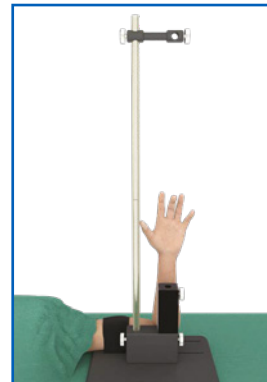
2A



2B



3

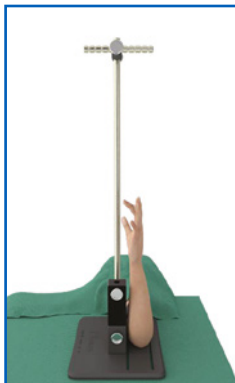


Position the forearm on the base with the elbow flexed at a 90° angle.

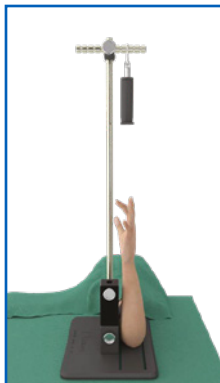
Insert the rod (2 assembled pieces) (Image 2a) and the wrist support (Image 2b) in the designated holes.

Block the arm by inserting the designated strap inside the slots. Insert traction pin to the rod. If necessary, it is possible to insert an extension rod.

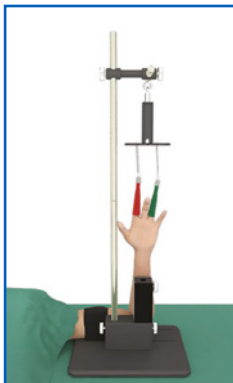
4A



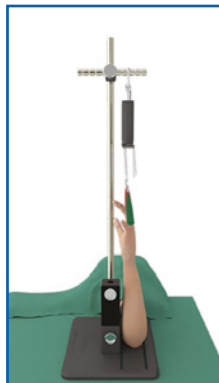
4B



5A



5B



Insert the fluted pin and the dynamometer (0-10kg) as shown in the image above.

Finger traps are preferably inserted on the 2nd and 4th fingers (not mandatory).

6A



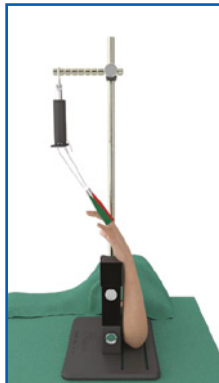
6B



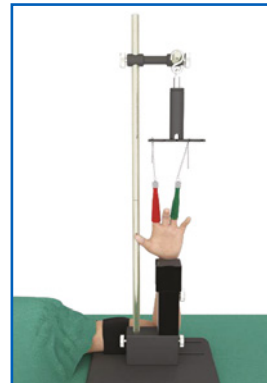
7A



7B



8



To increase the stability of the wrist during surgery, it is possible to insert a variable height extension to the existing support.

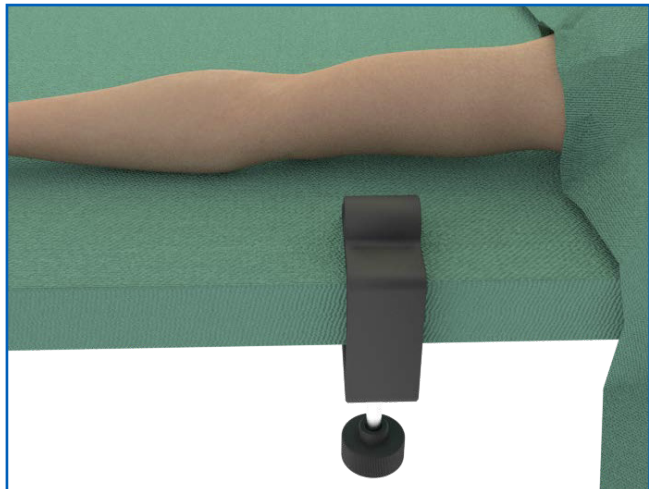
The wrist can be secured by inserting an extension to the existing support.

The position of the fluted pin and of the dynamometer can be varied depending on the desired position of the wrist.

The use of nylon finger traps enables a greater adaptability to varied finger dimensions.

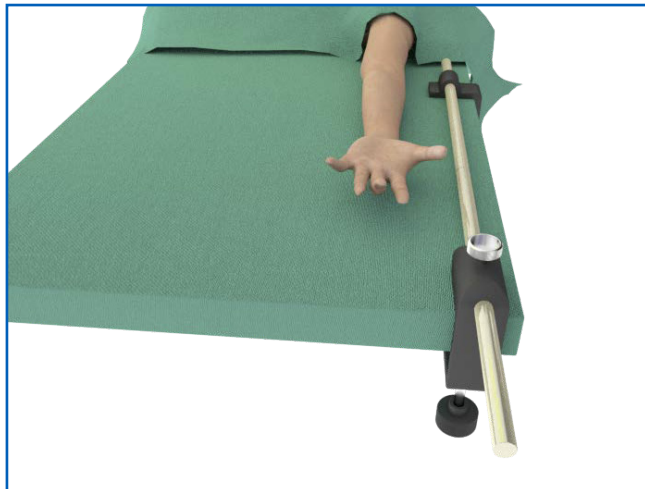
Horizontal application

1



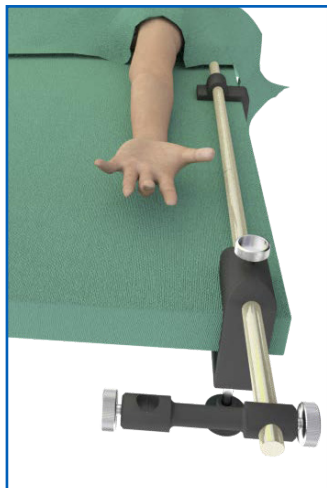
Position and block the clamp on the Operating Room table on the side where the Surgeon will perform surgery.

2



Insert the rod in the designated clamp and secure it.

3A

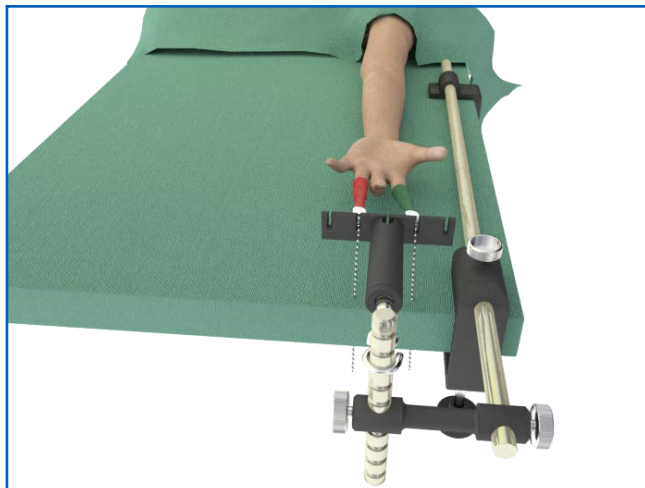


3A



Insert the traction pin on the rod bar and block.

4



Insert the fluted pin and the dynamometer.
Insert the traps on the fingers.

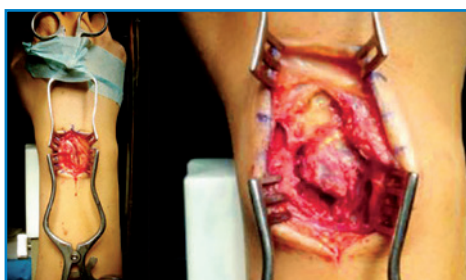
Clinical Cases

CASE 1

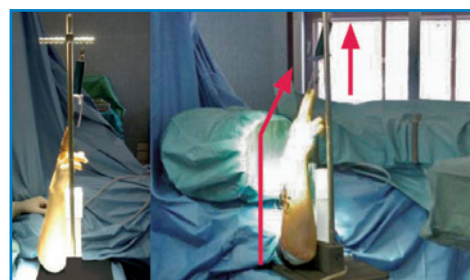
Vertical Application: Distal Radius Fracture - Dr. P.P. Borelli - Brescia, Italy



Preoperative X-ray



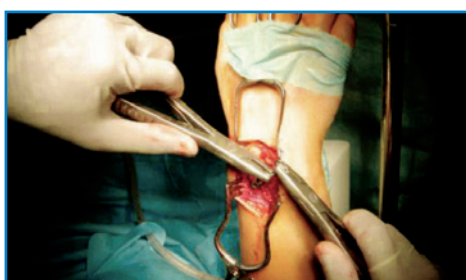
Intraoperative view of fracture



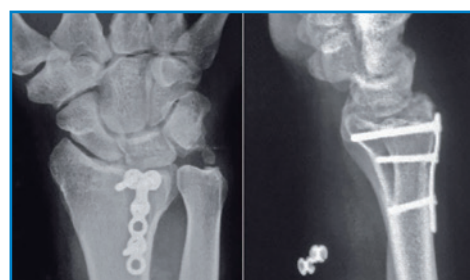
Ligamentotaxis using the Traction System



Intraoperative radiographic monitoring



Fixation of reduced fracture



Postoperative X-rays after 8 months

CASE 2

Horizontal Application: Distal radius and scaphoid fracture

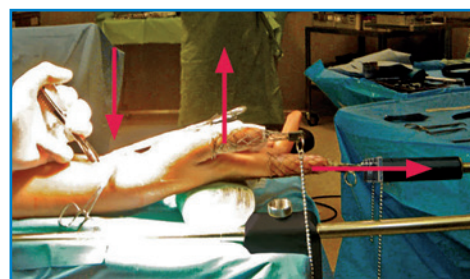
Dr. P.P. Borelli - Brescia, Italy



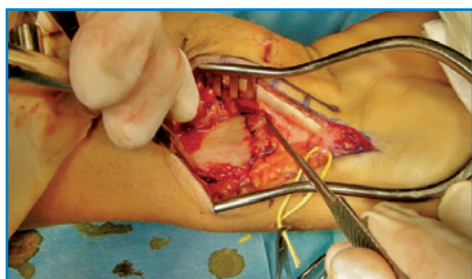
Preoperative X-rays



The thumb finger trap can support the hand in supinated position



Ligamentotaxis using the Traction System



Intraoperative view of fracture



Fixation of scaphoid without traction



Postoperative X-rays after 10 days



HEADQUARTERS

Via P. Gobetti, 56r - 16145 Genova
Tel. +39 010 30801 - Fax +39 010 3080210
www.mikai.it - servizio.clienti@mikai.it

MANUFACTURING FACILITY

Via Canestrello, 2 - 36050 Monteviale (VI)
Tel. +39 0444 950100 - Fax +39 0444 950133
www.mikai.it - servizio.clienti@mikai.it

