

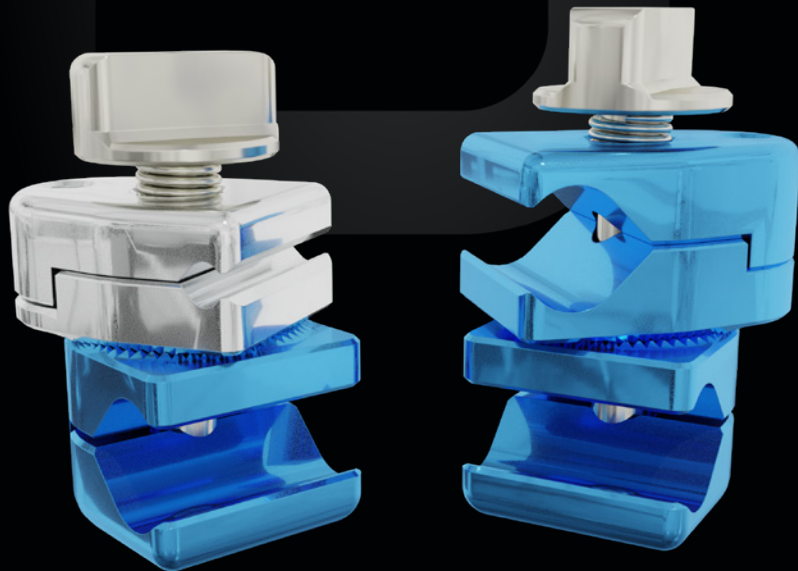
CLICKIT ER

EMERGENCY EXTERNAL FIXATION SYSTEM

Snap-in System

Versatile

MR Conditional



Indications

ClickIt ER is an emergency external fixation system MR conditional for temporary stabilisation of open fractures, unstable fractures and fractures with soft tissue injury.

FEATURES

Snap-in system
Provisional tightening by hand
Color coded clamps
Sterile

ADVANTAGES

Simple
Quick application
Blu for rod/rod and blu and grey for rod/screw
Ready to use

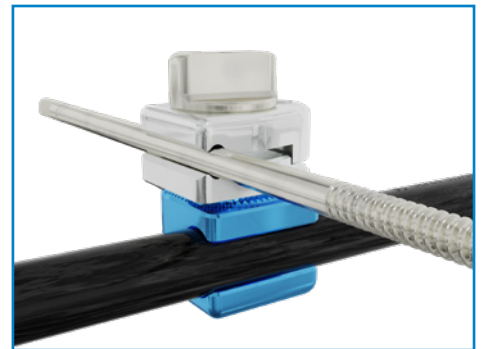
Components



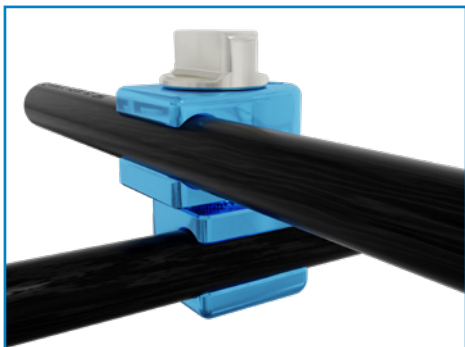
Carbon Fibre Rod
Ø 12 mm radiolucent.



Multiscrew clamp 5006504ST
Easy positioning of 2 or 3 screws.



Rod/Screw Clamp 5006502ST
Accepts 4,5 and 6mm screws.



Rod/Rod Clamp 5006500ST
Accepts two 12mm rods.



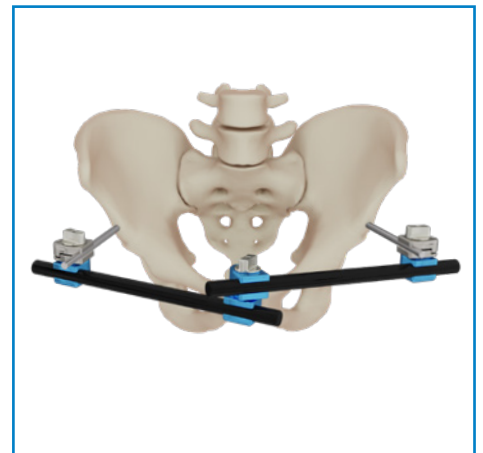
ER Hybrid Connecting Post 5006506ST
Allows for Hybrid fixator configurations.

Configurations

UPPER LIMB

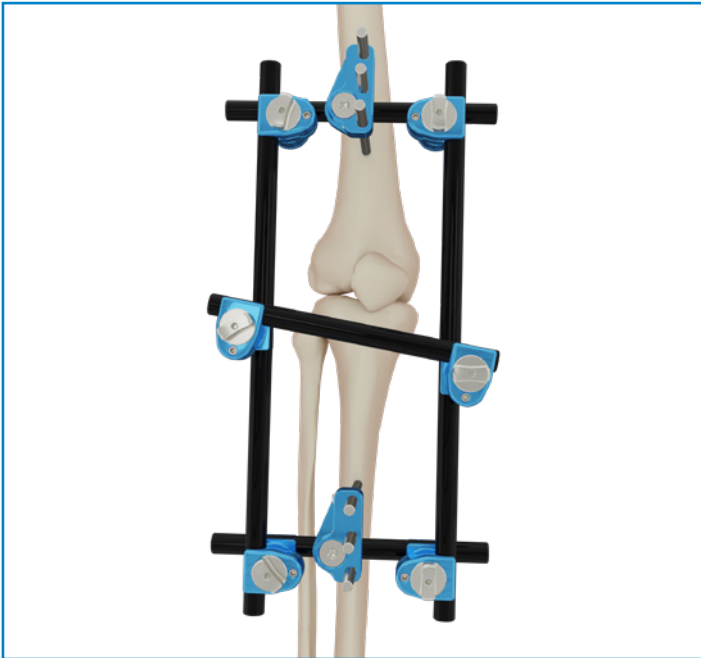
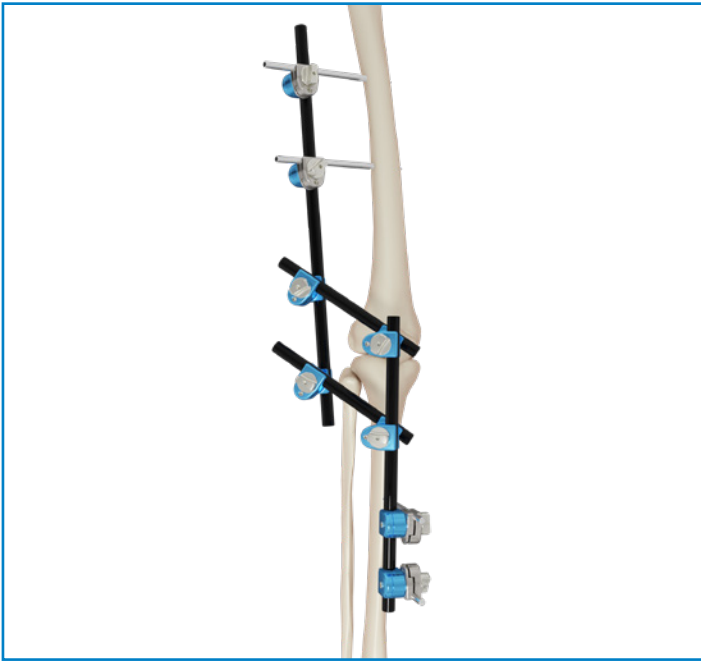


PELVIS



LOWER LIMB







A. Ankle Spanning ER Kit (cod. 5006600ST).

Sterilization

The components of the ClickIt ER system are supplied sterile.

We recommend sterilizing the instruments in saturated steam autoclave according to the following parameters:

TEMPERATURE: 134°

EXPOSURE: 10 min

CLICKIT ER

COMPONENTS and ACCESSORIES

Code	Description
5006500ST	Rod/rod clamp
5006502ST	Rod/screw clamp
5006504ST	ER multiscrew clamp
5006506ST	ER Hybrid Connecting Post
5006510ST	Rod Ø 12 L 100 mm
5006512ST	Rod Ø 12 L 150 mm
5006514ST	Rod Ø 12 L 200 mm
5006516ST	Rod Ø 12 L 250 mm
5006518ST	Rod Ø 12 L 300 mm
5006520ST	Rod Ø 12 L 350 mm
5006522ST	Rod Ø 12 L 400 mm
5006526ST	Rod Ø 12 L 500 mm
5006528ST	Rod Ø 12 L 600 mm
5006600VST	Ankle Spanning Kit
5006610VST	Tibia Kit
5006620VST	Knee Bridging Kit
5006630NST	Femur Kit

INSTRUMENTS *

Code	Description	Q.ty
5006562	Complete ClickIt ER instrument trax	
Comprising:		
5000124	Ø 3.0 mm hex screwdriver	1
5000600	T-wrench for screws Ø 4.0 mm	1
5000601	T-wrench for screws Ø 5.0 mm	1
5000602	T-wrench for screws Ø 6.0 mm	1
5000604	T-handle with AO attachment	1
5000606	Hexagonal rod Ø 3.0 mm AO connection	1
5006000	Ø 3.0 mm L-shaped Allen key	1
5000222	Twist drill Ø 3.5 mm L 200 mm	1
5006010	Drill guide Ø 3.5 mm L 110 mm	1
5000621	Universal T-wrench	1
5006.04	Ø 4.0 mm adapter t-wrench	1
5006.05	Ø 5.0 mm adapter t-wrench	1
5006.06	Ø 6.0 mm adapter t-wrench	1
5006564	ER rod template	1
5006560ER	ClickIt ER sterilization trax	1

* Implantable and sterile devices are covered by the CE-1936 marking, while non-sterile reusable instruments are covered by the CE marking



HEADQUARTERS

Via P. Gobetti, 56r - 16145 Genova
Tel. +39 010 30801 - Fax +39 010 3080210
www.mikai.it - servizio.clienti@mikai.it

MANUFACTURING FACILITY

Via Canestrello, 2 - 36050 Monteviale (VI)
Tel. +39 0444 950100 - Fax +39 0444 950133
www.mikai.it - servizio.clienti@mikai.it