

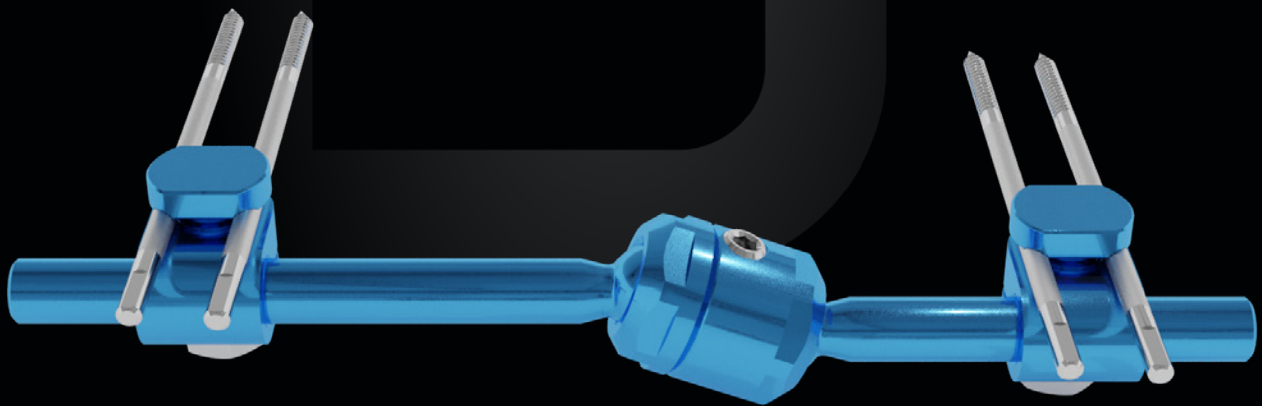
# STYLO DIABETIC FOOT

## FIXATOR FOR DIABETIC FOOT

Lightweight and durable

Single-use sterile kit

Ball joint



# Indications

Stabilisation of the medial column of the first ray after surgical treatment in metatarsophalangeal osteomyelitis and/or deformities secondary to Charcot neuro-osteoarthropathy pattern (1-2 according to the Frykberg Sanders classification).

## FEATURES

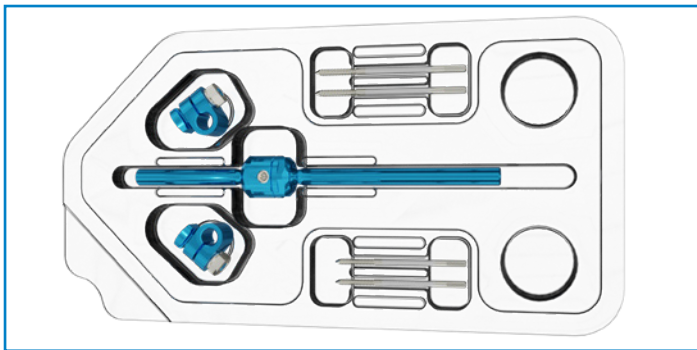
Single-use sterile kit  
Modular  
Aluminium and steel alloy

## ADVANTAGES

Ready to use  
Equipped with accessories for various applications  
Lightweight

# Stylo diabetic foot kit

CODE 5002001ASTA



## Description

## Qty.

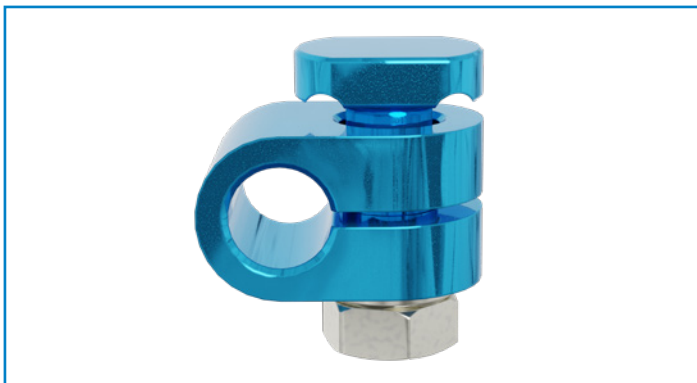
Fixator rod	1
Screw clamp	2
Screws, Ø 3.0 mm L 70 mm	2
Screws, Ø 2.5 mm L 60 mm with Ø 12 mm thread	2

# Components



## Fixator rod

The ball joint facilitates the application and allow movements on all planes.

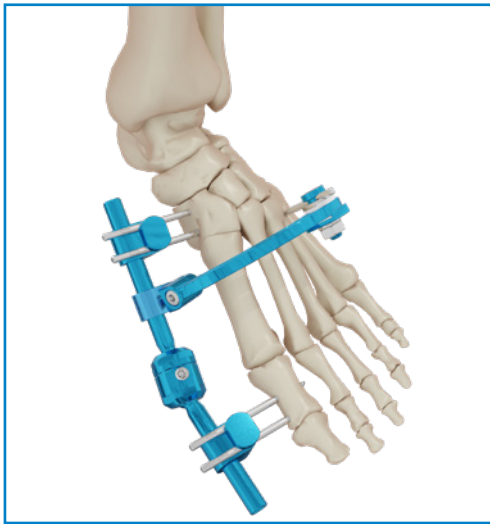


## Double screw clamp

Enables a pair of parallel screws to be applied.

Tightening the nut locks the screws onto the clamp and fastens the clamp onto the rod.

For improved implant stability, additional screws and/or Kirschner wires (1.5 mm to 3.0 mm) can be connected to the fixator rod using accessories.



## EXAMPLE OF SYSTEM WITH ARCH

Multiplanar system with 90° arch.

The arch provides improved fixator stability thanks to an additional screw in the IV metatarsal.

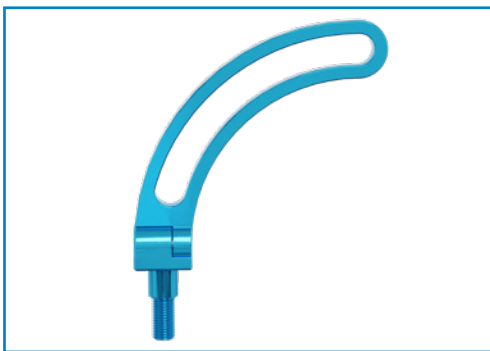
## Accessories



### Single open clamp

5002010AST

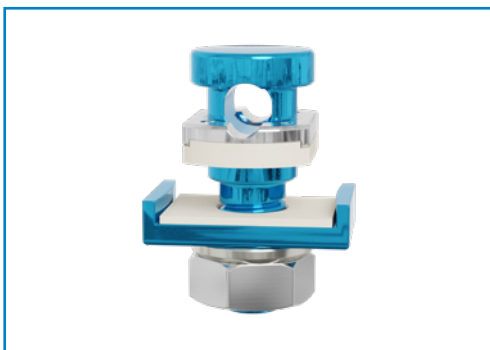
It enables the arch to be attached to the fixator rod and/or the stabilisation of an additional bone screw directly onto the fixator rod.



### Arch Ø 120 mm 90°

5002016ST

It enables the application of additional bone K-wires and/or screws on different planes for increased stability.



### Single clamp for arch

5000004ST

It can be used to stabilise additional screws/K-wires on the arch.

## Sterilization

The Stylo Diabetic Foot kit is supplied sterile.

We recommend sterilizing instruments in saturated steam autoclave according to the following parameters:

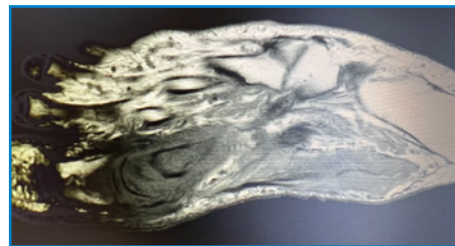
**TEMPERATURE:** 134°

**EXPOSURE:** 10 minutes

# Clinical case

Prof. Luca Dalla Paola

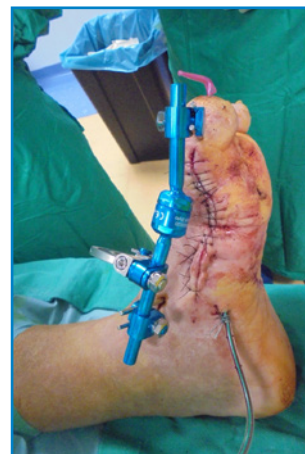
Ferrara University School of Medicine, Diabetic Foot Unit Maria Cecilia Hospital GVM Care & Research



♀ 60 years old  
Type 2 Diabetes Mellitus  
Large osteo involvement of 1<sup>st</sup>  
MTPJ and 1<sup>st</sup> metatarsal  
MRSA and Proteus



**MULTISTAGED APPROACH**  
**1<sup>st</sup> surgical step**  
Open large sequestrectomy  
and soft tissue surgical debridement  
NPWT with antiseptic agent instillation  
(super oxidized solution)



**MULTISTAGED APPROACH**  
**2<sup>nd</sup> surgical step (after 5 days)**  
Surgical debridement  
Antibiotic loaded (vanco-genta) PMMA spacer  
Stabilization with kw and external fixation

## 5002001ASTA **STYLO DIABETIC FOOT KIT**

## 5002001AST **STYLO PLUS DIABETIC FOOT KIT**

Consisting of: a fixator rod, two Stylo clamps, four screws, a 90° arch, an arch clamp and a single open coupling clamp.

### COMPONENTS and ACCESSORIES

Code	Description
5002007ST	Extension 40 mm
5002010ST	Stylo single clamp
5002010AST	Stylo single open clamp
5002011ST	Stylo double clamp
5002016ST	Arch, Ø 120 mm 90°
5002016CST	Arch, Ø 120 mm 90° complete with screw clamp and coupling clamp
5002015ST	Stylo rail coupler
5000004ST	Single clamp for arch
5002401ST	Self-drilling cortical screw, shaft Ø 3.0 mm L 60 mm thread L 20 mm
5002402ST	Self-drilling cortical screw, shaft Ø 3.0 mm L 70 mm thread L 20 mm
5002403ST	Self-drilling cortical screw, shaft Ø 3.0 mm L 80 mm thread L 20 mm
5002404ST	Self-drilling cortical screw, shaft Ø 3.0 mm L 90 mm thread L 20 mm
5002411ST	Self-drilling cortical screw shaft, Ø 3.0 mm L 50 mm thread Ø 2.5 mm L 12 mm
5002412ST	Self-drilling cortical screw shaft, Ø 3.0 mm L 60 mm thread Ø 2.5 mm L 12 mm
5002413ST	Self-drilling cortical screw shaft, Ø 3.0 mm L 70 mm thread Ø 2.5 mm L 12 mm
5002414ST	Self-drilling cortical screw shaft, Ø 3.0 mm L 80 mm thread Ø 2.5 mm L 12 mm
5002431ST	Threaded wire, Ø 1.5 mm L 100 mm thread L 4 mm
	This wire can be used with clamps 5002010ST, 5002010AST, 5002011ST and 5000004ST

### INSTRUMENTS \*

Code	Description	Qty.
5002297	Stylo Diabetic Foot instrument sterilization case	
Comprising:		
5002056	Screw extension	1
5000130	Guide cannula Ø 3.0 mm	1
5002070	Dual rail cannula, Ø 3.0 mm	1
5000214	T-wrench Ø 10 mm	1
5000124	Hex screwdriver Ø 3.0 mm	1
5000625	T-wrench for 3.0 mm and 5.0 mm hexagonal screws	1
5002290	Empty sterilization case	1

\* Implantable and sterile devices are certified by the CE-1936 marking, while non-sterile reusable instruments are certified by the CE marking



#### **HEADQUARTERS**

Via P. Gobetti, 56r - 16145 Genova  
Tel. +39 010 30801 - Fax +39 010 3080210  
[www.mikai.it](http://www.mikai.it) - [servizio.clienti@mikai.it](mailto:servizio.clienti@mikai.it)

#### **MANUFACTURING FACILITY**

Via Canestrello, 2 - 36050 Monteviale (VI)  
Tel. +39 0444 950100 - Fax +39 0444 950133  
[www.mikai.it](http://www.mikai.it) - [servizio.clienti@mikai.it](mailto:servizio.clienti@mikai.it)