

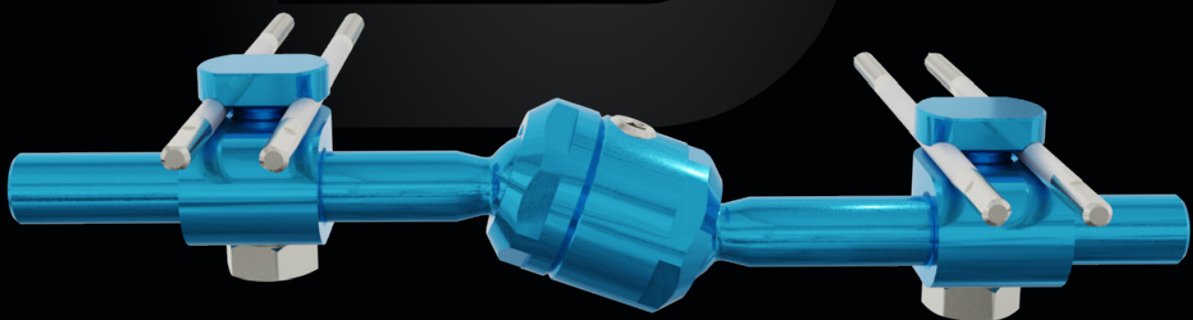
# STYLO CALCANEUS

## CALCANEAL EXTERNAL FIXATOR

Versatile and modular

Ball joint

Sterile



# Introduction

The treatment of calcaneal fractures is often considered a challenge for the orthopaedic surgeon, as it involves critical issues related to anatomy and biomechanics.

In type II, III and IV fractures of the Sanders classification, it is thought that surgical treatment with plates and screws can give better results than conservative treatment. The literature however shows that there is no real advantage of one method over the other.

Internal fixation often results in better reductions, but with high postoperative complications, while conservative treatment involves less bleeding but can pose problems in terms of achieving satisfactory reductions.

Minimally invasive surgery, combined with a new generation of fixators dedicated to calcaneal fractures, ensures better functional results, thanks to less surgical exposure, reduced surgery and hospitalisation times, and fewer complications.

Reliance on modern calcaneal fixators allows percutaneous reduction and good stability of fixation, significantly reducing the risk of complications.

## Indications

Compound joint fractures of the calcaneus type I, II, III and IV according to Sanders classification, and fractures associated with severe soft tissue damage.

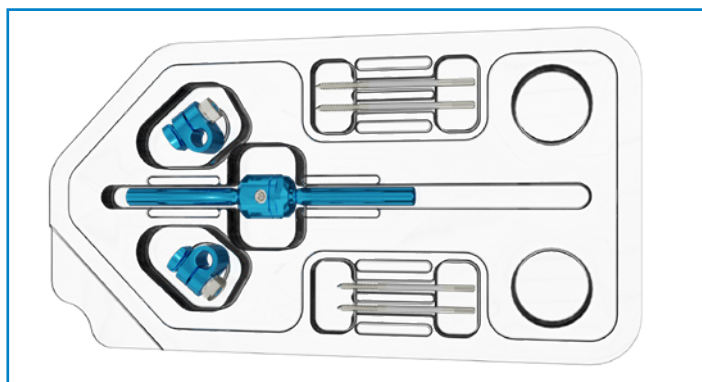
### FEATURES

Sterile disposable kit  
Modular  
Universal  
Made of aluminium alloy and stainless steel

### ADVANTAGES

Ready for use  
Fitted with accessories for different applications  
Both right and left  
Lightweight

## Stylo Calcaneus Kit



### Description

### Qty

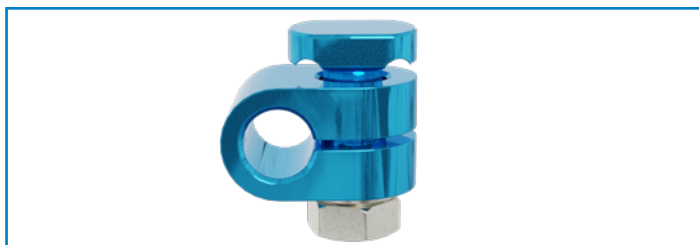
Short body of fixator	1
Clamps	2
3.0 mm Ø, 70 mm L screw	4

# Components



## Short body of fixator

The ball joint facilitates reduction and allows correction in any plane.

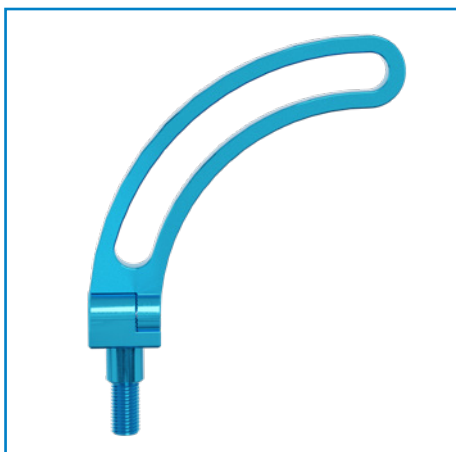


## Double screw clamp

Allows a pair of parallel screws to be applied. Tightening the nut allows the screws to be locked onto the clamp and the clamp onto the body.

For better fracture fixation and stability, additional screws and/or (1.5 mm to 3.00 mm) K-wires can be connected to the body of the fixator using accessories.  
The clamps can be rotated for optimal the positioning of the gripping elements.

# Accessories



## 120 mm Ø 90° arch 5002016ST

It allows additional bone gripping elements (K-wires and/or screws) in different planes, affording better stability.



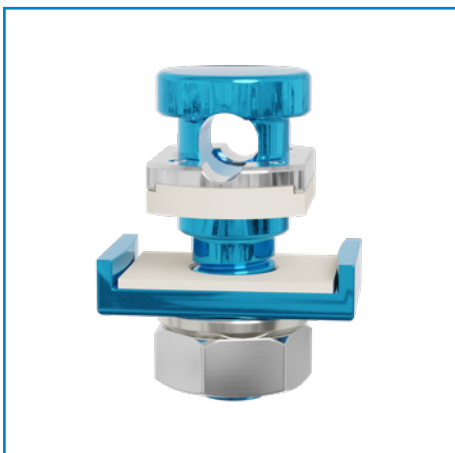
## Rail bar 5002015ST

It allows additional bone gripping elements (K-wires and/or screws) in different planes, affording better stability.



### Open-end single clamp 5002010AST

Allows the arch or rail bar to be connected to the body of the fixator and/or the fixation of an additional gripping element, directly on the body of the fixator.



### Single arch clamp 5000004ST

It allows additional gripping elements to be fixated to the arch or rail bar.



### Single clamp 5002010ST

It allows an additional gripping element to be fixated to the fixator body.

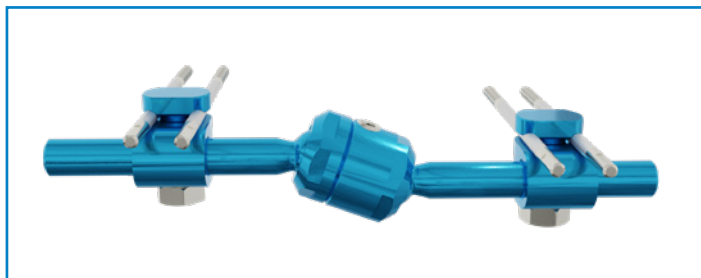


### Extended or T-clamp 5002011ST

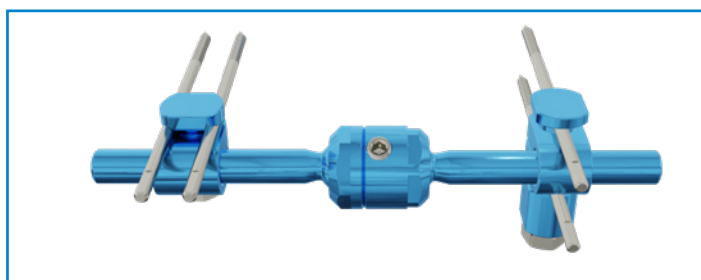
It allows a pair of parallel screws to be applied to a plane orthogonal to the plane of the fixator body.

# Implant configurations

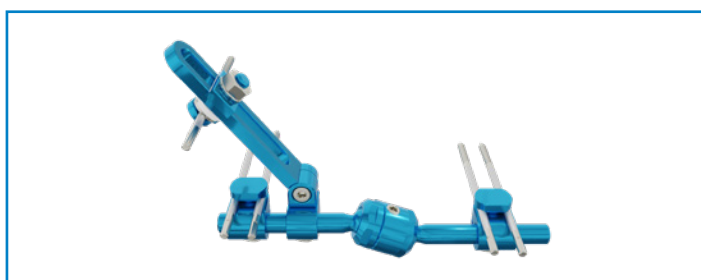
Thanks to the modularity and versatility features of the fixator, various implant types are possible in order to meet surgical and anatomical requirements to the best possible extent.



BASE IMPLANT



IMPLANT WITH T-CLAMP



MULTI-PLANAR IMPLANT  
WITH RAIL BAR



MULTI-PLANAR PLANT WITH ARCH

These are some of the possible implant configurations.

## Sterilization

The Stylo Calcaneus kit is supplied sterile.

It is recommended that the instrument be sterilized in a saturated steam autoclave as follows:

**TEMPERATURE:** 134°

**EXPOSURE:** 10 minutes

# 5002002CST    STYLO CALCANEUS KIT

## COMPONENTS and ACCESSORIES

Code	Description
5002007ST	40 mm extension
5002010ST	Stylo single clamp
5002010AST	Stylo open-end single clamp
5002011ST	Stylo double extended clamp
5002022ST	Stylo double clamp
5002016ST	120 mm Ø 90° arch
5002016CST	120 mm Ø 90° arch complete with screw clamp
5002015ST	Stylo rail connector
5000004ST	Single arch clamp
5002401ST	Self-drilling cortical screw - shank 3.0 mm Ø, 60 mm L, thread 20 mm L
5002402ST	Self-drilling cortical screw - shank 3.0 mm Ø, 70 mm L, thread 20 mm L
5002403ST	Self-drilling cortical screw - shank 3.0 mm Ø, 80 mm L, thread 20 mm L
5002404ST	Self-drilling cortical screw - shank 3.0 mm Ø, 90 mm L, thread 20 mm L
5002411ST	Self-drilling cortical screw - shank 3.0 mm Ø, 50 mm L, thread 2.5 Ø, 12 mm L
5002412ST	Self-drilling cortical screw - shank 3.0 mm Ø, 60 mm L, thread 2.5 Ø, 12 mm L
5002413ST	Self-drilling cortical screw - shank 3.0 mm Ø, 70 mm L, thread 2.5 Ø, 12 mm L
5002414ST	Self-drilling cortical screw - shank 3.0 mm Ø, 80 mm L, thread 2.5 Ø, 12 mm L
5002431ST	1.5 mm Ø, 100 mm L threaded wire - thread 4.0 mm L This wire can be used with 5002010ST, 5002010AST, 5002011ST and 5000004ST clamps.

## INSTRUMENTS \*

Code	Description	Qty
5006562STY	Complete Stylo instrument sterilization set	
Composta da:		
5002072	Double cannula	1
5002056	Screw extension	1
5000214	10 mm T-wrench	1
5000623	10 mm flat wrench	1
5000625	3.0-5.0 mm hexagonal wrench and T-handle wrench for screws	1
5002024	Compression and distraction unit (optional)	1
5006560STY	Empty ClickIt Stylo instrument sterilization set	1

\* Implantable and sterile devices are covered by CE 1936 mark, non-sterile reusable instruments are CE marked



#### **HEADQUARTERS**

Via P. Gobetti, 56r - 16145 Genova  
Tel. +39 010 30801 - Fax +39 010 3080210  
[www.mikai.it](http://www.mikai.it) - [servizio.clienti@mikai.it](mailto:servizio.clienti@mikai.it)

#### **MANUFACTURING FACILITY**

Via Canestrello, 2 - 36050 Monteviale (VI)  
Tel. +39 0444 950100 - Fax +39 0444 950133  
[www.mikai.it](http://www.mikai.it) - [servizio.clienti@mikai.it](mailto:servizio.clienti@mikai.it)